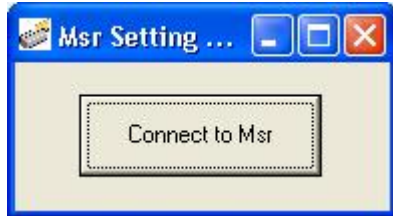


MC15 MSR Setting Utility Manual

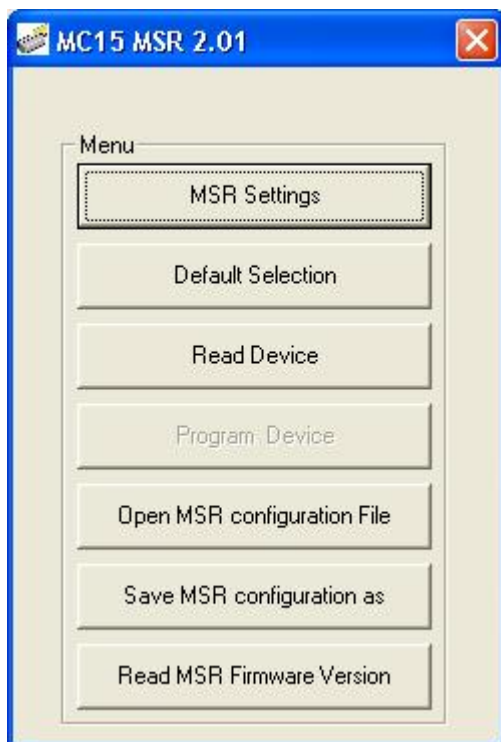
1. Starting



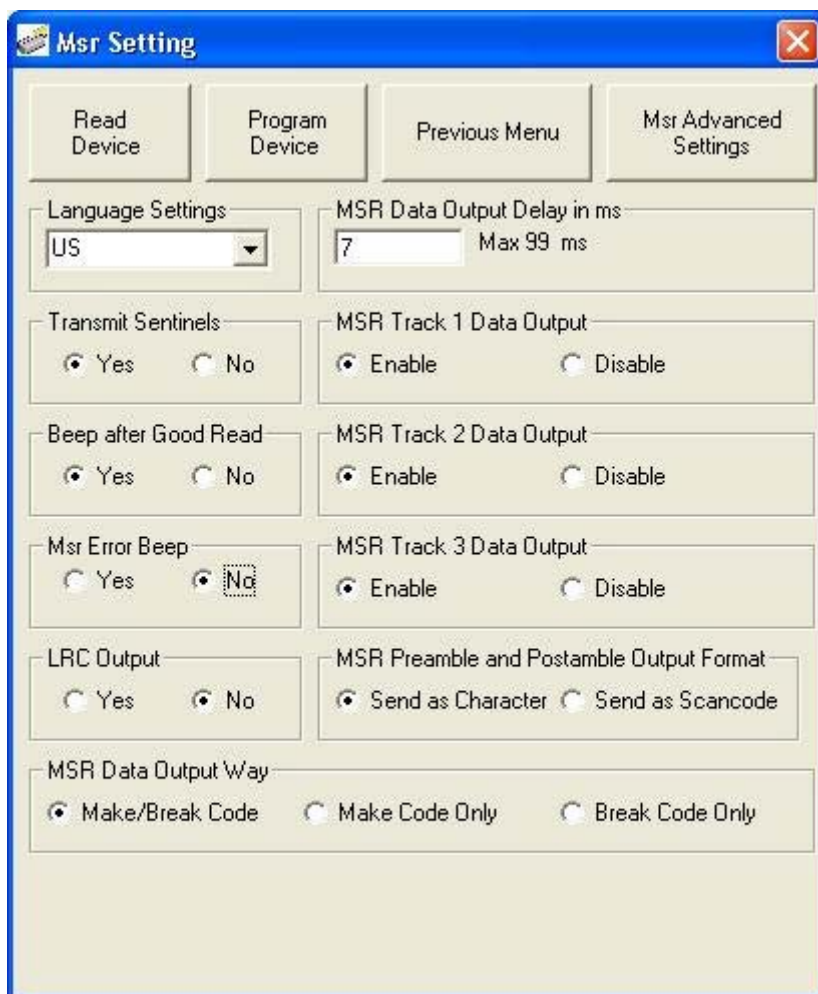
Click the “Connect to MSR”, the utility will communicate with the MSR to detect the Firmware version, and lead to the corresponding setting screen.

This document is for the MSR of Firmware Version 2.01.

The setting screen for Version 2.01 is shown below.



2. MSR Setting



Language Settings

Select the language

Transmit Sentinels

Select whether to output the Track Sentinels

Beep after Good Read

Select whether to beep when good read

MSR Error Beep

Select whether to beep when card error

LRC Output

Select whether to output the Track LRC

MSR Data Output Delay

Define the time delay between characters

MSR Track 1 Data Output

Select whether to output the Track 1 data

MSR Track 2 Data Output

Select whether to output the Track 2 data

MSR Track 3 Data Output

Select whether to output the Track 3 data

MSR Pre/Postamble Output Format

Select the Preamble/Postamble output format

MSR Data Output Way

Select the MSR data output way

Explanation

1. MSR Track Data Format

<Start Sentinels> <Data> <End Sentinels> <LRC>

Transmit Sentinels selects whether to output the Start Sentinels and End Sentinels.

LRC Output selects whether to output the LRC.

2. MSR Data

<MSR Data Preamble> (Item1)

<Track 1 Preamble> <Track 1 Data> <Track 1 Postamble> (Item2)

<Track 2 Preamble> <Track 2 Data> <Track 2 Postamble> (Item3)

<Track 2 Preamble> <Track 3 Data> <Track 3 Postamble> (Item4)

<MSR Data Postamble> (Item5)

MSR Track 1 Data Output selects whether to output Item2

MSR Track 2 Data Output selects whether to output Item3

MSR Track 3 Data Output selects whether to output Item4

MSR Pre/Postamble Output Format selects the format of Item1 and Item5

MSR Data Output Way selects the output format of all the Items

3. MSR Data Output Format

Suppose each data is composed of the Make code and Break code (Scan code), **MSR Data Output Way** selects whether to output both of them, Make code only or Break code only.

If the **MSR Pre/Postamble Output Format** is defined to be **Send as Scancode**, the code of the Preamble and Postamble will be defined by the user.

3. MSR Advanced Settings

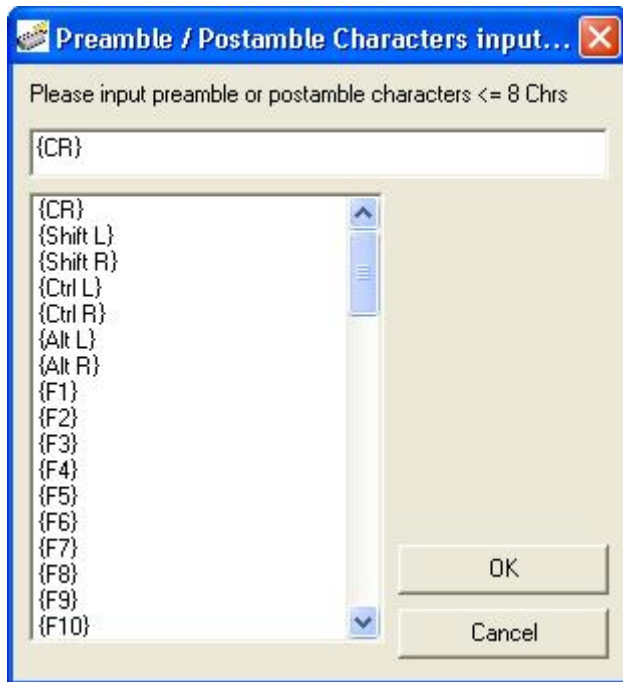
The MSR Advanced Settings is to define the Preamble and Postamble.

There are two options, **Character** and **Scan code (code set 2)**.

If the **MSR Pre/Postamble Output Format** is defined to be **Send as Character**, the MSR Advanced Settings screen will be,

The screenshot shows the 'MSR Advance Settings' dialog box. It is divided into two main sections. The left section, titled 'SCAN CODES for Preamble and Postamble (SCAN Set 2)', contains eight rows of character selection grids for 'Msr Preamble', 'Msr Postamble', 'Track 1 Preamble', 'Track 1 Postamble', 'Track 2 Preamble', 'Track 2 Postamble', 'Track 3 Preamble', and 'Track 3 Postamble', and 'JIS II Preamble' and 'JIS II Postamble'. The right section, titled 'Preamble / Postamble Characters', contains eight rows of text input fields with 'Edit' buttons for 'Msr Data Preamble' (containing 'MSR'), 'Msr Data Postamble' (containing 'CR'), 'Track 1 Preamble', 'Track 1 Postamble', 'Track 2 Preamble', 'Track 2 Postamble', 'Track 3 Preamble', and 'Track 3 Postamble', and 'JIS II Preamble' and 'JIS II Postamble'. A 'Previous' button is located at the bottom right of the dialog.

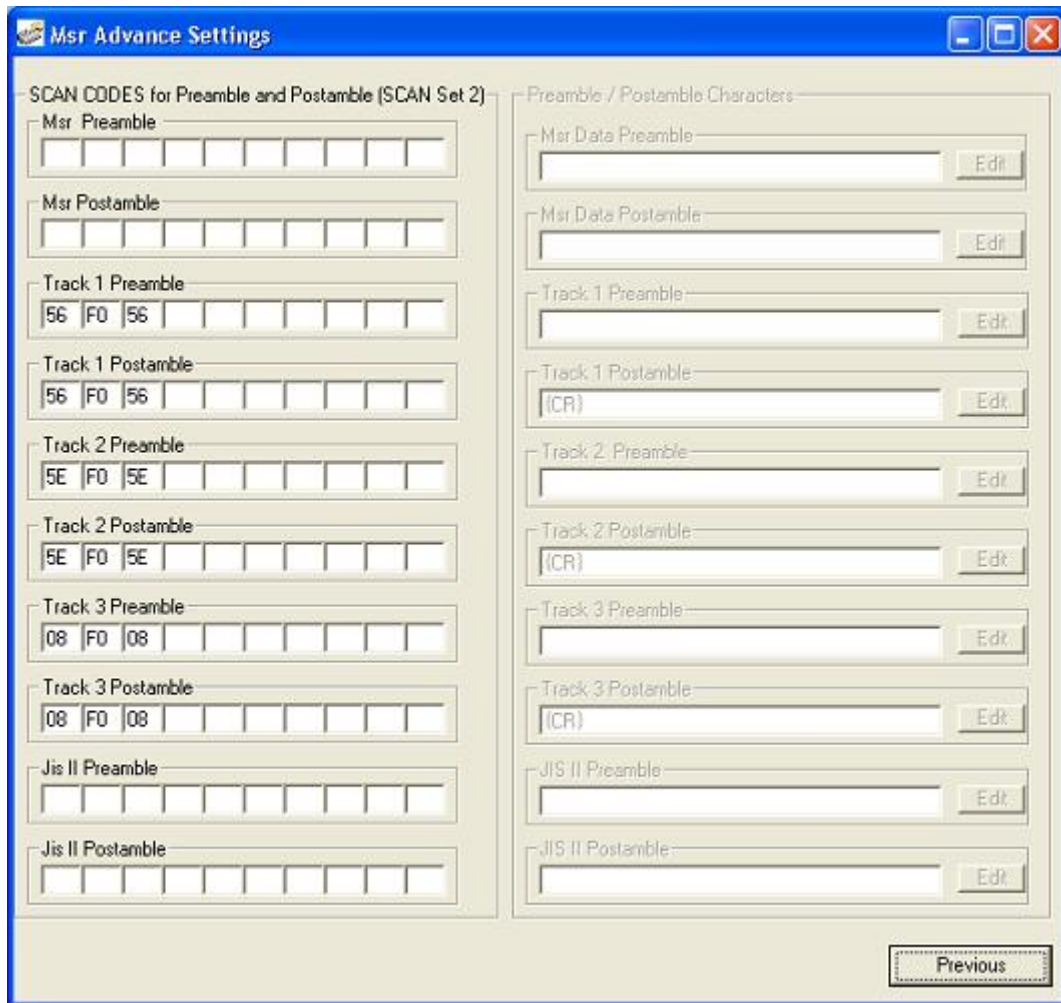
Click the Edit next to the setting to define the Preamble and Postamble character.



Key in the character, or select the special key below.

The maximum character can be defined is eight.

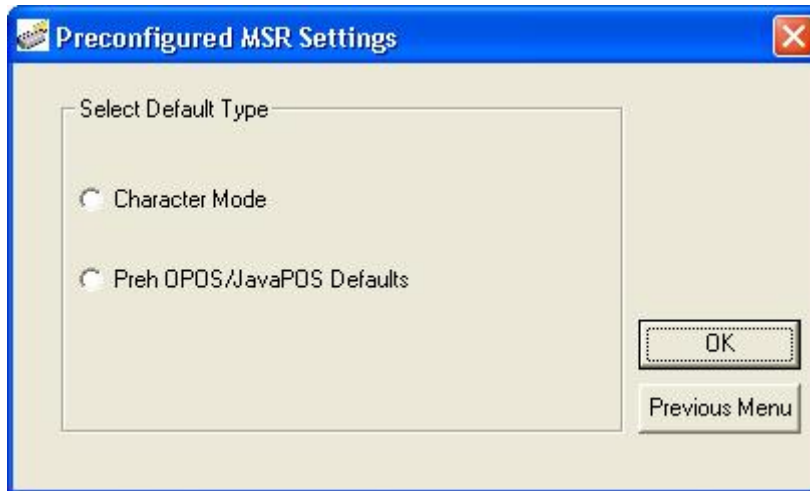
If the **MSR Pre/Postamble Output Format** is defined to be **Send as Scancode**, the MSR Advanced Settings screen will be,



Define the scan code (Code Set 2) in Hex format.

Click **Previous** to back to the previous screen.

4. Default Selection



Select the default type to reset the MSR configuration.

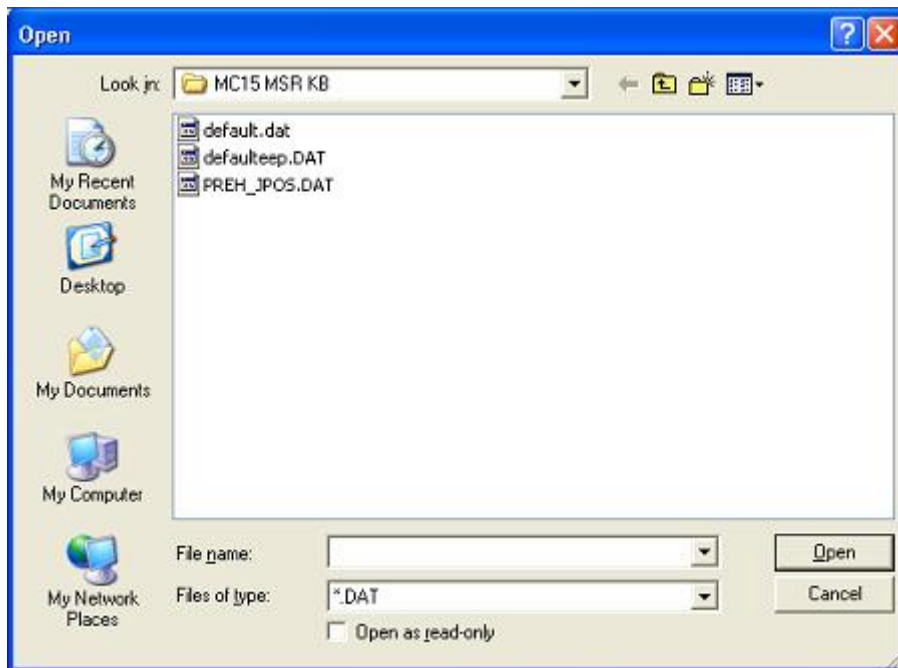
5. Read Device

It is to read back the configuration from the MSR device.

6. Program Device

It is to program the MSR device, so that the configuration will be saved into the device. Note that the configuration will not take effect unless it is programmed to the MSR device.

7. Open MSR Configuration File



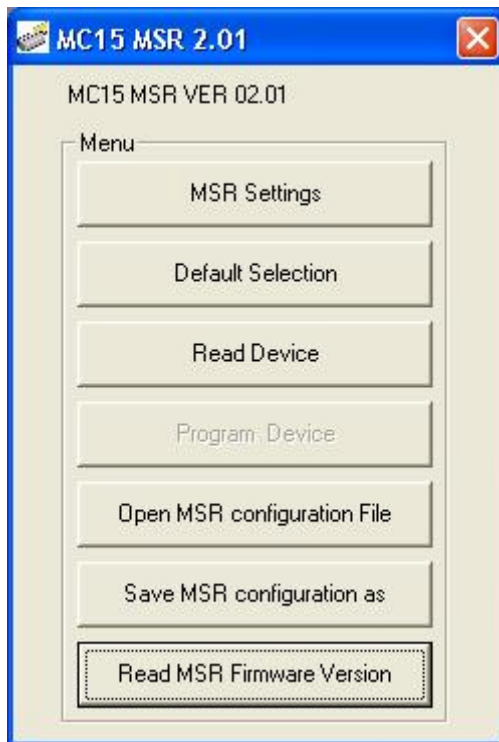
Open a file saved before.

8. Save MSR Configuration as



The MSR configuration can be saved as a “*.DAT” file.

9. Read MSR Firmware Version



The firmware version will be shown on the top.